



BXUV.G301 Fire Resistance Ratings - ANSI/UL 263

Page Bottom

Fire Resistance Ratings - ANSI/UL 263

See General Information for Fire Resistance Ratings - ANSI/UL 263

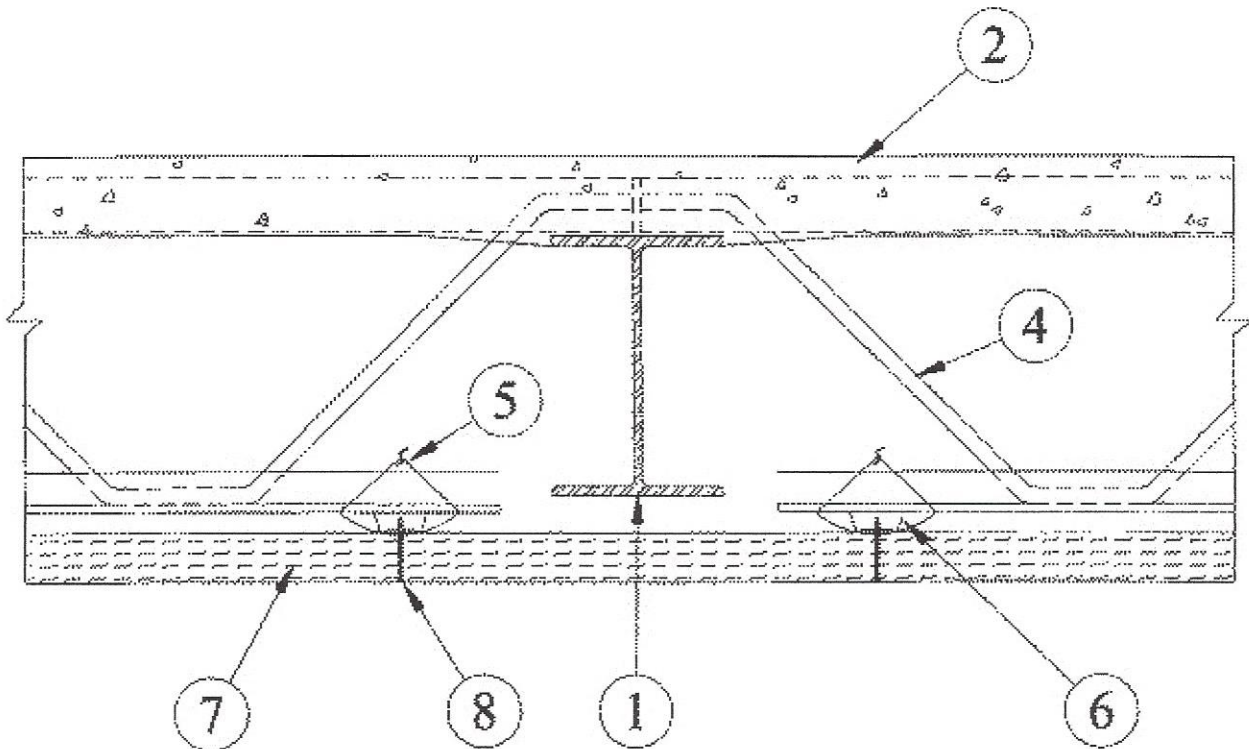
Design No. G301

December 07, 2001

Unrestrained Assembly Rating - 2 Hr (See Items 2, 4A and 11)

Unrestrained Beam Rating - 2 Hr (See Items 2, 4A and 11)

Load Restricted for Canadian Applications — See Guide BXUV7



1. **Beam** — Min size W8 x 24.

2. **Normal-Weight or Lightweight Concrete** — Normal weight concrete, carbonate or siliceous aggregate, 150 plus or minus 3 lb ftweight, 3500 psi compressive strength. Lightweight concrete, expanded shale, clay or slate aggregate by rotary kiln method, 114 plus or minus 6 lb/ftweight, 3500 psi compressive strength.

Unrestrained Assembly Rating Hr	Min Slab Thkns In	
	8 In. Deep Joist	10 In. Deep Joist
2	2 3/4	2 1/2

3. **Welded Wire Fabric** — (Not Shown) Min 6 x 6 — W2.1 x W2.1, or as required by the latest ACI code.

4. **Structural Steel Members*** — Only Hambro joists, min nominal depth 8 or 10 in. max spacing 49 1/4 in. O.C.

HAMBRO STRUCTURAL SYSTEMS, DIV OF

CANAM STEEL CORP — Type D500

4A. **Steel Form Units** — (Not Shown)—Optional—Nom 5/8 in. deep corrugated steel form units nom 2-1/2 in. pitch, 28 gauge galv, painted or uncoated. For floors employing steel form units, concrete thickness is measured from the top of the form units.

4B. **Permanent Roll Bars** — (Not shown) — Optional—Installed perpendicular to joists to support corrugated steel forms, Item 4A. Hat-shaped steel section, 1/2 in. wide, 2 or 2-1/2 in. deep, 18 gauge steel. Ends engaged into slots near top of joists, spaced max 30 in. O.C.

5. **Tie Wire** — No. 18 SWG galv steel wire. Tie wire used to attach furring channels to steel joists.

6. **Furring Channels** — No. 25 MSG galv steel, 7/8 in. high, 2-3/4 in. base width, 1-3/8 in. face width and 12 ft long. Installed perpendicular to steel joists 24 in. O.C. At mineral and fiber board end joints, one channel approx. 60 in. long located on each side and 3 in. from end joint. All channels tied to bottom chord of each joist with double strand of tie wire. At splices, channels overlapped 6 in. and tied together with double strand of tie wire near each end of overlap.

7. **Mineral and Fiber Board*** — Min Nominal 1 in. thick, 4 X 6 ft. wide installed with long dimension perpendicular to furring channels and butt joints located between joists. Main board to be fastened to furring channels using screws and washers (Item 8 and 9 respectively). A 3 in. wide strip of mineral and fiber board shall be centered over the entire length of butt joints. Strips fastened to main board from the ceiling side using spiral fasteners spaced 6 in. O.C. Butt joints in adjacent rows to be staggered min of 2 ft. Edge joints shall occur at and be centered over furring channels and be fastened in the manner specified in Items 8 and 9.

ALBI MFG, DIV OF STANCHEM INC — Type Dri-Clad

8. **Fasteners** — 1-5/8 in. long Type S, self-drilling and self-tapping, with bugle head. Spaced 12 in. O.C. along each furring channel.

9. **Washers** — (Not shown) 1 in. diameter or 1 in. square steel plate washer. One washer required per fastener (Item 8).

10. **Mineral and Fiber Boards*** — (Optional, not shown) — Applied over concrete floor with no limit on overall thickness.

See Mineral and Fiber Board (CERZ) category for names of manufacturers.

11. **Roof Covering** — (Not shown, for use with insulation described in Item 9.) — Class A, B or C **Built-Up Roof Covering Materials*** consisting only of felt and asphalt (or coal tar pitch) materials in alternate layers. See Building Materials Directory.

*Bearing the UL Classification Mark

Last Updated on 2001-12-07

[Questions?](#)

[Notice of Disclaimer](#)

[Page Top](#)

Copyright © 2008 Underwriters Laboratories Inc.®

The appearance of a company's name or product in this database does not in itself assure that products so identified have been manufactured under UL's Follow-Up Service. Only those products bearing the UL Mark should be considered to be Listed and covered under UL's Follow-Up Service. Always look for the Mark on the product.

UL permits the reproduction of the material contained in the Online Certification Directory subject to the following conditions: 1. The Guide Information, Designs and/or Listings (files) must be presented in their entirety and in a non-misleading manner, without any manipulation of the data (or drawings). 2. The statement "Reprinted from the Online Certifications Directory with permission from Underwriters Laboratories Inc." must appear adjacent to the extracted material. In addition, the reprinted material must include a copyright notice in the following format: "Copyright © 2008 Underwriters Laboratories Inc.®"

An independent organization working for a safer world with integrity, precision and knowledge.



HAT CHANNEL

DRICLAD G301

24"

24"

24"

JOISTS

16"

16"

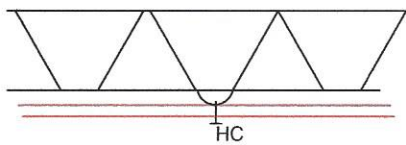
16"

6"OC

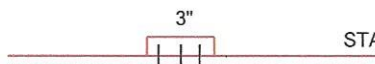
12" OC

STAGGERED 2'

See attached UL Design G301



JOIST



STAGGERED 2'